



FOR LEASE

2190 Warden Ave, 212a

Toronto, Ontario, M1T 1V6

PROPERTY SUMMARY:

 Asking Price:	\$18 Sq Ft Net
 Taxes:	\$14/2024/T.M.I.
 Total Area:	680 Sq Ft
 Use:	Office



Stephen & Mariya Lilly
Commercial Brokers
Remax Hallmark Realty Ltd
Stephen Direct: (416)802-4228
Mariya Direct: (416)824-5078
email: info@TorontoCommercialProperties.ca



PROPERTY OVERVIEW

Perfectly located near the 401 with easy transit access, this second-floor open concept office space offers unparalleled connectivity.

Enjoy comprehensive amenities including ample parking, elevator access, and secure surroundings.

Our all-inclusive lease ensures a hassle-free experience with no surprise costs. Join a vibrant mix of professionals in a dynamic atmosphere conducive to growth.

With on-site services enhancing daily operations and opportunities for cross-disciplinary collaborations, 2190 Warden Ave isn't just a location, it's where business thrives.



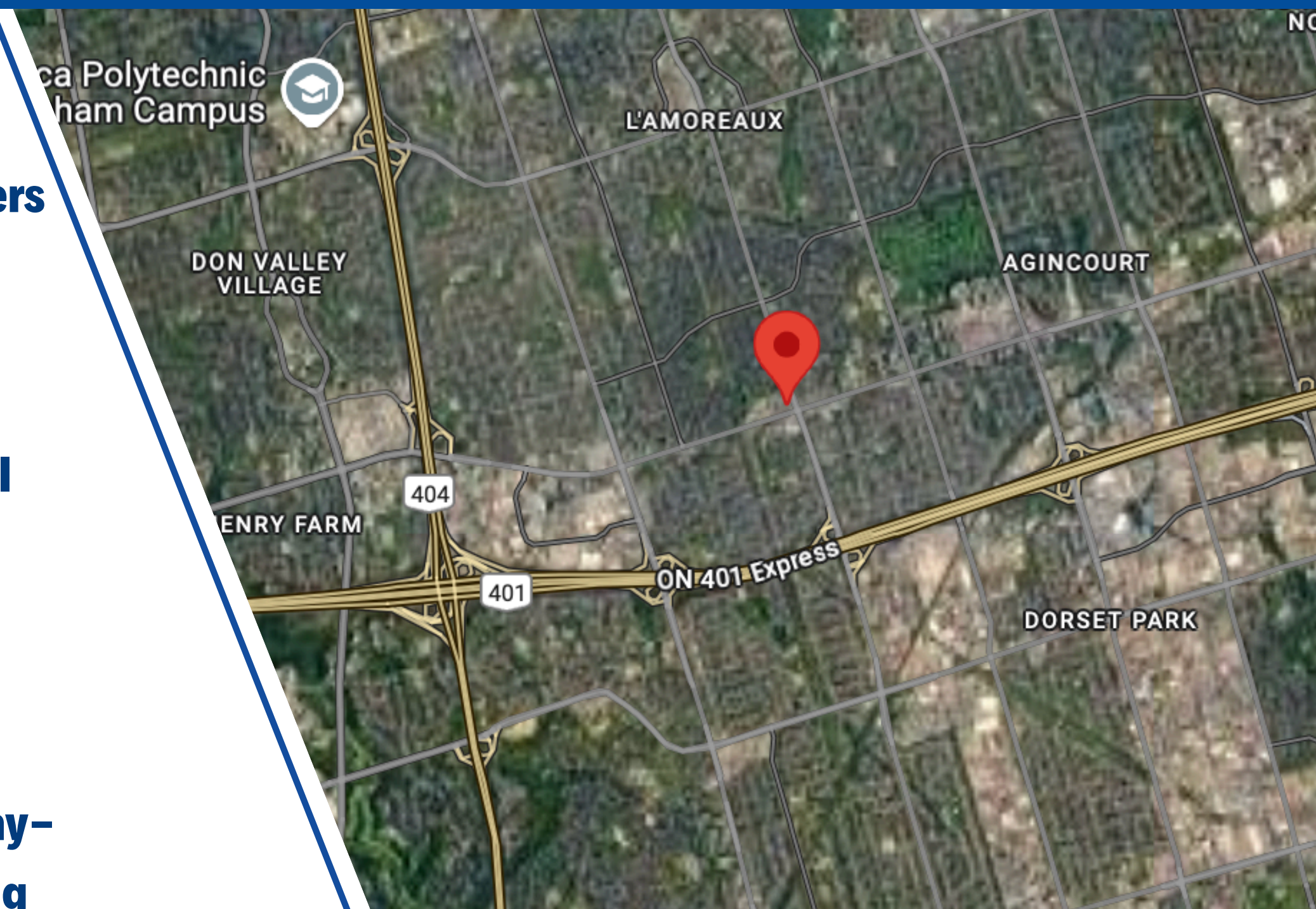
Stephen & Mariya Lilly
Commercial Brokers
Remax Hallmark Realty Ltd
Stephen Direct: (416)802-4228
Mariya Direct: (416)824-5078
email: info@TorontoCommercialProperties.ca



LOCATION

Situated at 2190 Warden Avenue, this office space offers a professional setting in one of Scarborough's most established commercial nodes. Conveniently located near Warden and Sheppard, the property provides excellent access to Highway 401, DVP, and 404, as well as multiple TTC bus routes, making commuting simple for staff and clients alike.

Surrounded by a wide range of business services, restaurants, and retail amenities, the area supports day-to-day operations with ease. Whether you're a growing business or an established firm, this prime office location combines accessibility, visibility, and convenience in the heart of Scarborough.



Stephen & Mariya Lilly

Commercial Brokers

Remax Hallmark Realty Ltd

Stephen Direct: (416)802-4228

Mariya Direct: (416)824-5078

email: info@TorontoCommercialProperties.ca



www.TorontoCommercialProperties.ca

RE/MAX
COMMERCIAL[®]

PHOTOS



Stephen & Mariya Lilly

Commercial Brokers

Remax Hallmark Realty Ltd

Stephen Direct: (416)802-4228

Mariya Direct: (416)824-5078

email: info@TorontoCommercialProperties.ca



www.TorontoCommercialProperties.ca

RE/MAX
COMMERCIAL

PHOTOS



← Directory →	
208 DENTURE 4 YOU - DENTURE CLINIC	201 FOREVER spa
#209 Radiant Rehab Clinic(physio,chiro)	202 MATRIX LEGAL SERVICES
210 ASIA STUDIO MASSAGE 	203 - SHAYA LAW / DHARSH LEGAL
#211A Safe Hands Driving School	204- Accomplishment Education
#211 Steps N Strides	205 DR. MEERA, DENTIST
212 DENTAL LABORATORY	206 PSYCHOLOGIST - MING CHE YEH, PhD, C. Psych.
212A	MIDAS TOUCH WELLNESS SPA 215
214 <small>LAW OFFICE OF</small> SATWANT S. KHOSLA	
BRIGHTEN FINANCIAL SERVICES INC. 218	



Stephen & Mariya Lilly

Commercial Brokers

Remax Hallmark Realty Ltd

Stephen Direct: (416)802-4228

Mariya Direct: (416)824-5078

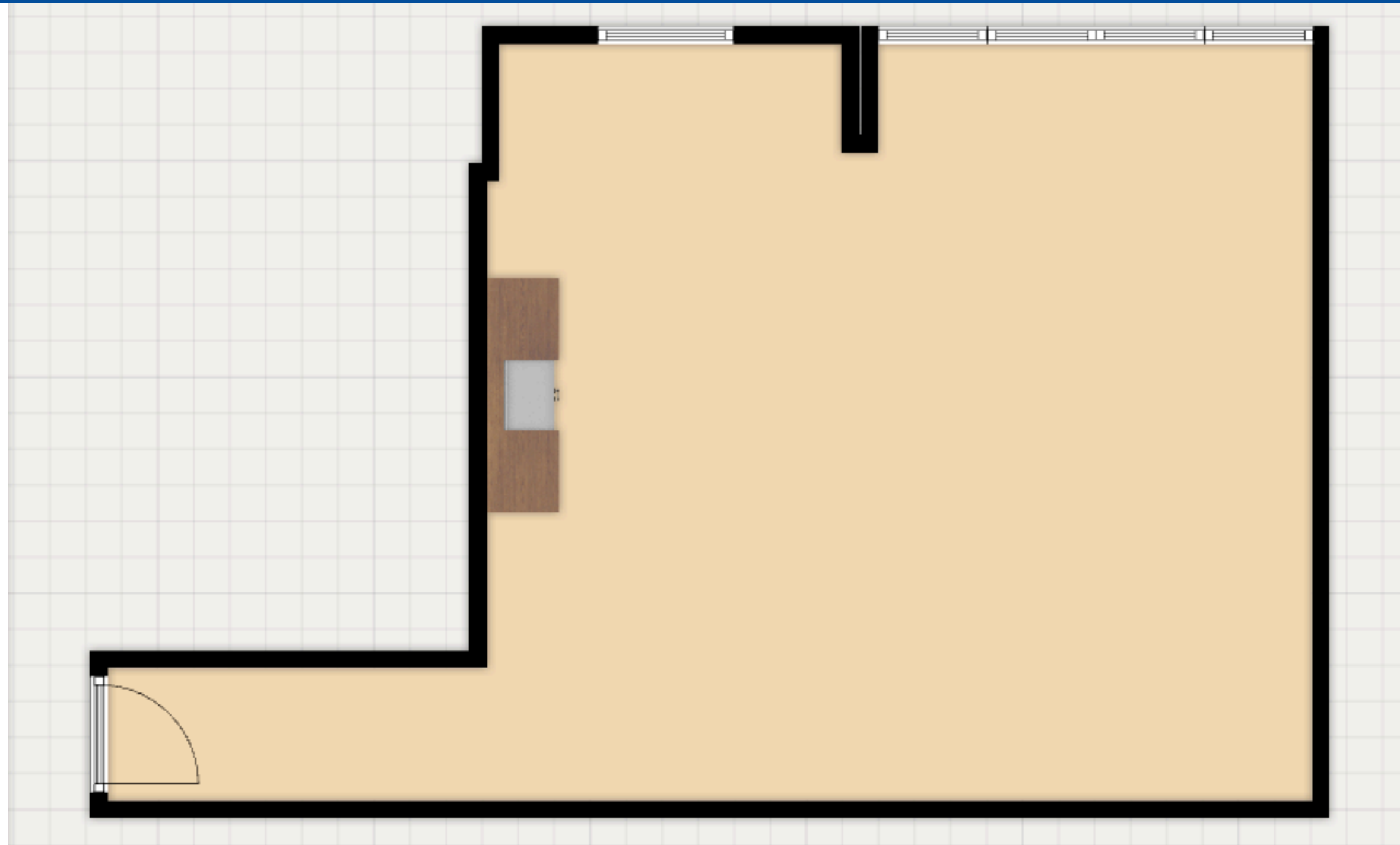
email: info@TorontoCommercialProperties.ca



www.TorontoCommercialProperties.ca

RE/MAX
COMMERCIAL[®]

LAYOUT



Stephen & Mariya Lilly

Commercial Brokers

Remax Hallmark Realty Ltd

Stephen Direct: (416)802-4228

Mariya Direct: (416)824-5078

email: info@TorontoCommercialProperties.ca