



FOR SUBLEASE

100 Broadview Avenue, 400
Toronto, ON M4M 3H3

PROPERTY SUMMARY:

 Asking Price:	\$39.50 Gross Lease
 Total Area:	7,500–11,000 Sq Ft
 Use:	Office
 Parking:	Up to 8 Parking Spaces



Stephen & Mariya Lilly
Commercial Brokers
RE/MAX Hallmark Realty Ltd., Brokerage
Stephen Direct: (416)802-4228
Mariya Direct: (416)824-5078
email: info@TorontoCommercialProperties.ca



PROPERTY OVERVIEW

From 7,500 to 11,000 sq. ft. of improved office space available for sublease within a full-floor suite at 100 Broadview Ave, shared with a reputable non-profit organization.

Ideal for other like-minded organizations seeking a flexible, turn-key environment with access to private offices, open work areas, meeting rooms, a shared kitchen/lounge, and a large server room with supplemental HVAC.

Located with convenient access to transit and downtown.



Stephen & Mariya Lilly
Commercial Brokers
RE/MAX Hallmark Realty Ltd., Brokerage
Stephen Direct: (416)802-4228
Mariya Direct: (416)824-5078
email: info@TorontoCommercialProperties.ca



www.TorontoCommercialProperties.ca



PROPERTY OVERVIEW

Flexible layout and inclusive rental rate with short- or long-term options available.

Utilities and additional services are to be shared.

Access to shared reception, meeting rooms, kitchen/lounge, theatre room, large server room with supplemental HVAC, existing office furniture (optional).

Up to 8 parking spaces are included.



Stephen & Mariya Lilly

Commercial Brokers

RE/MAX Hallmark Realty Ltd., Brokerage

Stephen Direct: (416)802-4228

Mariya Direct: (416)824-5078

email: info@TorontoCommercialProperties.ca



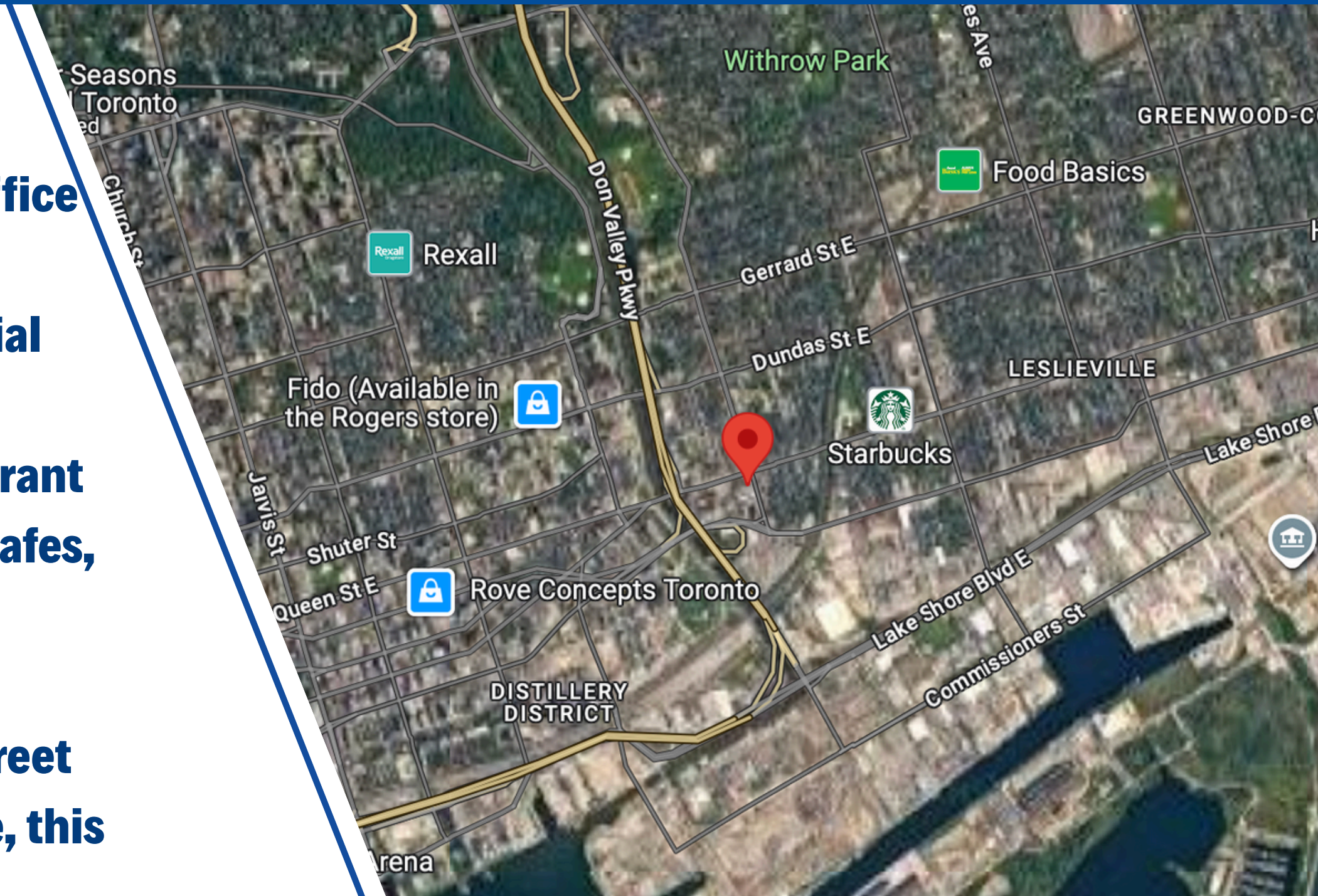
www.TorontoCommercialProperties.ca

RE/MAX
COMMERCIAL®

LOCATION

Located at 100 Broadview Avenue, Suite 400, this office space offers an exceptional opportunity in one of Toronto's most creative and fast-growing commercial areas. Nestled in the Riverside/Leslieville neighbourhood, the building is surrounded by a vibrant mix of media agencies, tech firms, design studios, cafes, and retail amenities.

With direct access to the DVP, steps to the Queen Street streetcar, and just minutes from the downtown core, this location offers unmatched connectivity and urban energy—ideal for businesses looking to position themselves in a dynamic and inspiring environment.



Stephen & Mariya Lilly

Commercial Brokers

RE/MAX Hallmark Realty Ltd., Brokerage

Stephen Direct: (416)802-4228

Mariya Direct: (416)824-5078

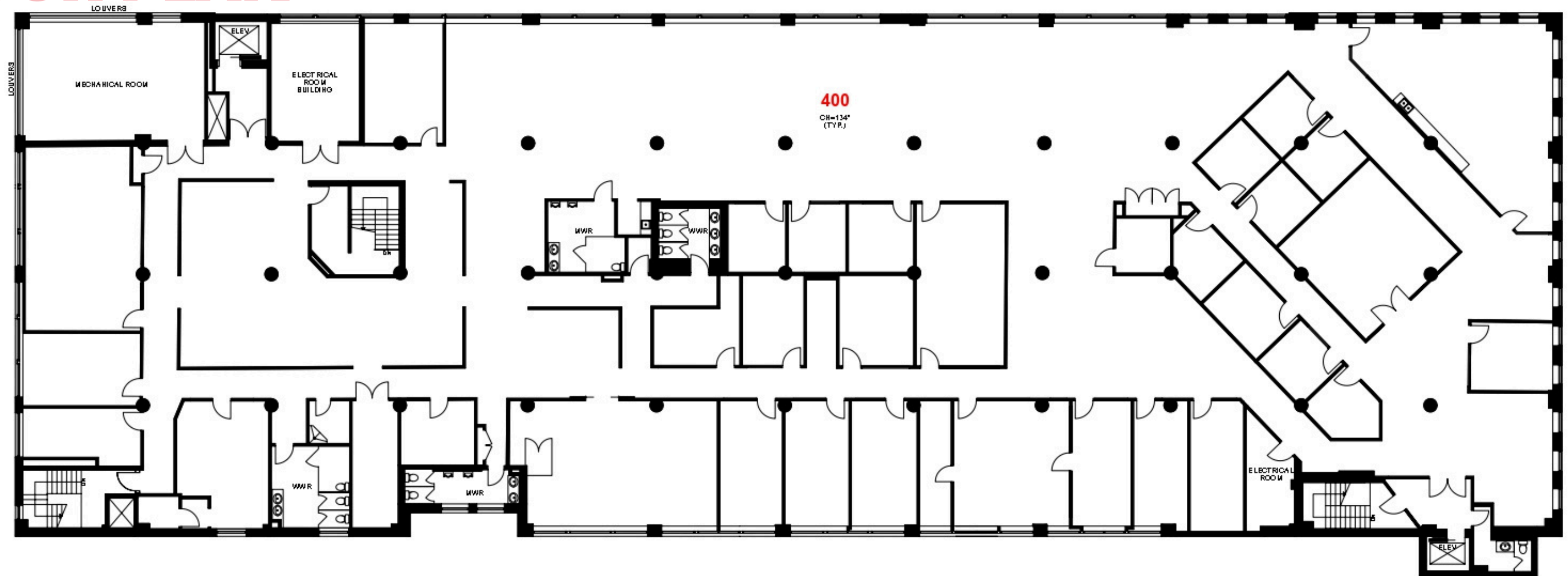
email: info@TorontoCommercialProperties.ca



www.TorontoCommercialProperties.ca

RE/MAX
COMMERCIAL

FLOOR PLAN*



***This is a full space floor plan. The exact locations and dimensions are to be negotiated.**



Stephen & Mariya Lilly

Commercial Brokers

RE/MAX Hallmark Realty Ltd., Brokerage

Stephen Direct: (416)802-4228

Mariya Direct: (416)824-5078

email: info@TorontoCommercialProperties.ca



www.TorontoCommercialProperties.ca

RE/MAX
COMMERCIAL[®]

PHOTOS



Stephen & Mariya Lilly

Commercial Brokers

RE/MAX Hallmark Realty Ltd., Brokerage

Stephen Direct: (416)802-4228

Mariya Direct: (416)824-5078

email: info@TorontoCommercialProperties.ca



www.TorontoCommercialProperties.ca

RE/MAX
COMMERCIAL[®]

PHOTOS



Stephen & Mariya Lilly

Commercial Brokers

RE/MAX Hallmark Realty Ltd., Brokerage

Stephen Direct: (416)802-4228

Mariya Direct: (416)824-5078

email: info@TorontoCommercialProperties.ca



www.TorontoCommercialProperties.ca

RE/MAX
COMMERCIAL[®]

PHOTOS



Stephen & Mariya Lilly

Commercial Brokers

RE/MAX Hallmark Realty Ltd., Brokerage

Stephen Direct: (416)802-4228

Mariya Direct: (416)824-5078

email: info@TorontoCommercialProperties.ca



www.TorontoCommercialProperties.ca

RE/MAX
COMMERCIAL[®]

PHOTOS



Stephen & Mariya Lilly

Commercial Brokers

RE/MAX Hallmark Realty Ltd., Brokerage

Stephen Direct: (416)802-4228

Mariya Direct: (416)824-5078

email: info@TorontoCommercialProperties.ca



www.TorontoCommercialProperties.ca

RE/MAX
COMMERCIAL[®]

PHOTOS



Stephen & Mariya Lilly

Commercial Brokers

RE/MAX Hallmark Realty Ltd., Brokerage

Stephen Direct: (416)802-4228

Mariya Direct: (416)824-5078

email: info@TorontoCommercialProperties.ca



www.TorontoCommercialProperties.ca

RE/MAX
COMMERCIAL[®]

PHOTOS



Stephen & Mariya Lilly

Commercial Brokers

RE/MAX Hallmark Realty Ltd., Brokerage

Stephen Direct: (416)802-4228

Mariya Direct: (416)824-5078

email: info@TorontoCommercialProperties.ca