

95 VICTORIA ST

95 VICTORIA ST S, WOODSTOCK, ON N4S 3K2



PROPERTY DESCRIPTION

2.05 AC lot with approvals for approximately 80,000 sf over 2 five story mixed-use buildings, plus an existing building for a Restaurant/ Lounge with approx 10,600 sqft over 2 floors and basement (and approx. 3,100 sqft of patio.)

PROPERTY HIGHLIGHTS

- Corner Lot
- Lots of Available Parking
- 2 SPA Approved Mixed use Building sites
- 1 Commercial Building fully gutted, on the far West side of the Site. (Set to Leased)
- Close to Fanshawe College Woodstock campus
- 8 Minutes to the Toyoto Manufacturing Plant

OFFERING SUMMARY

Sale Price:	N/A
Lot Size:	2.049 Acres

APPROVALS

- West building 6,479 sqft of Commercial on the Main Floor and 38,879 sqft of Residential Units over the floors 2-6
- East Building has 7,556 sqft of Commercial space on the Main Floor with 33,475 Sqft of Residential space over floors 2-6.
- ***For More information please contact the Listing Broker to fill out the NDA to receive the full package.***



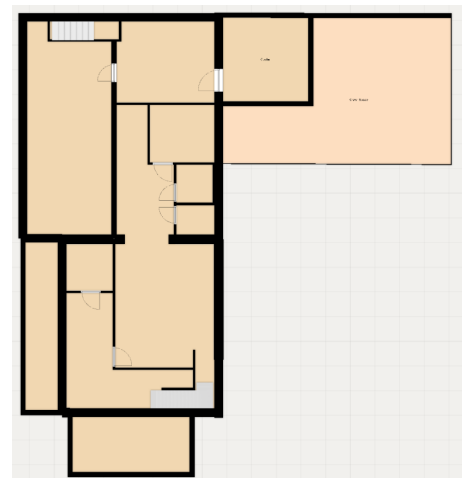
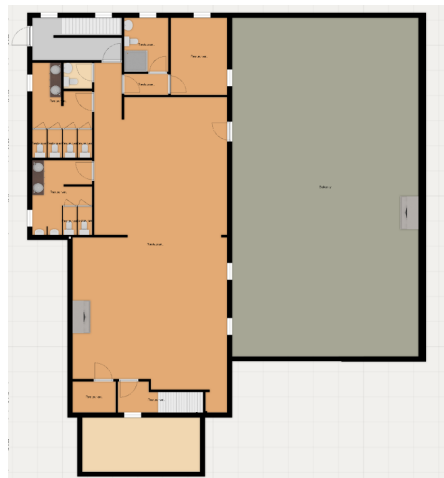
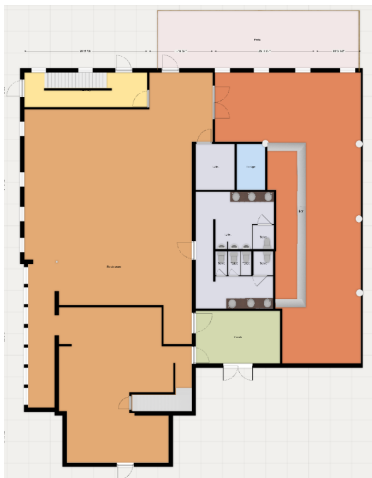
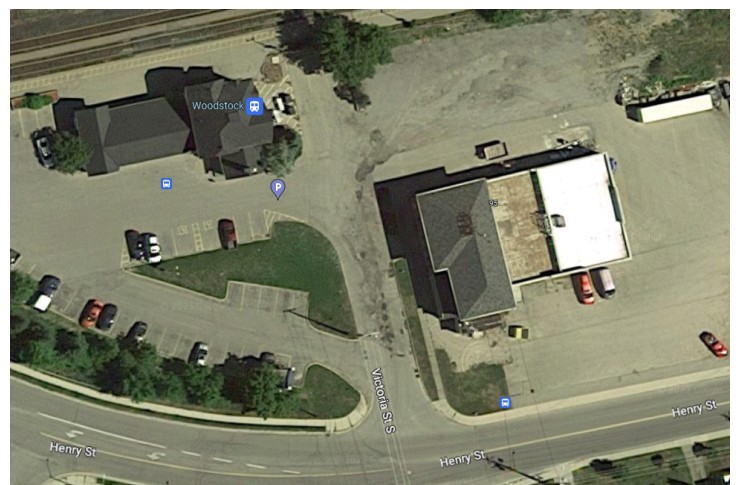
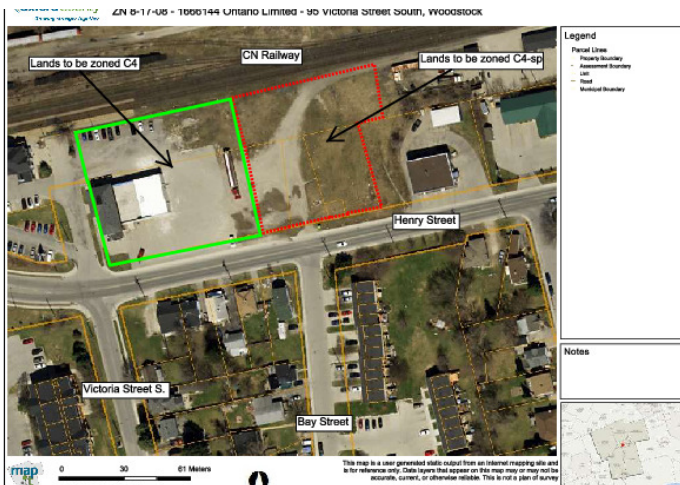
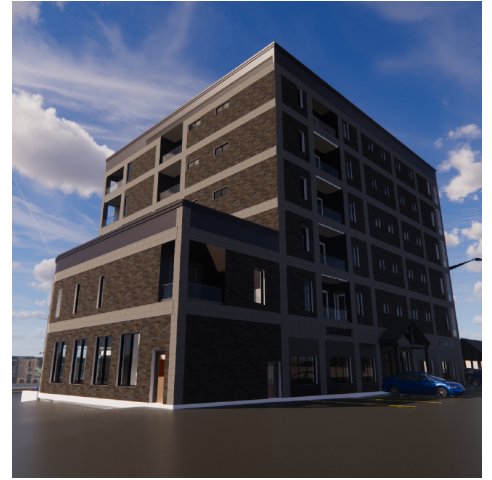
HALLMARK REALTY LTD
Each office independently owned and operated

MARIYA LILLY
Broker
416.494.7653
mariya.lilly@remax.net

STEPHEN LILLY
Broker
416.494.7653
info@TorontoCommercialProperties.ca
ON - Ontario #4745527
685 Sheppard Ave E Ste 401,
Toronto, ON M2K 1B6

95 VICTORIA ST

95 VICTORIA ST S, WOODSTOCK, ON N4S 3K2



HALLMARK REALTY LTD
Each office independently owned and operated

MARIYA LILLY
Broker
416.494.7653
mariya.lilly@remax.net

STEPHEN LILLY
Broker
416.494.7653
info@TorontoCommercialProperties.ca
ON - Ontario #4745527
685 Sheppard Ave E Ste 401,
Toronto, ON M2K 1B6

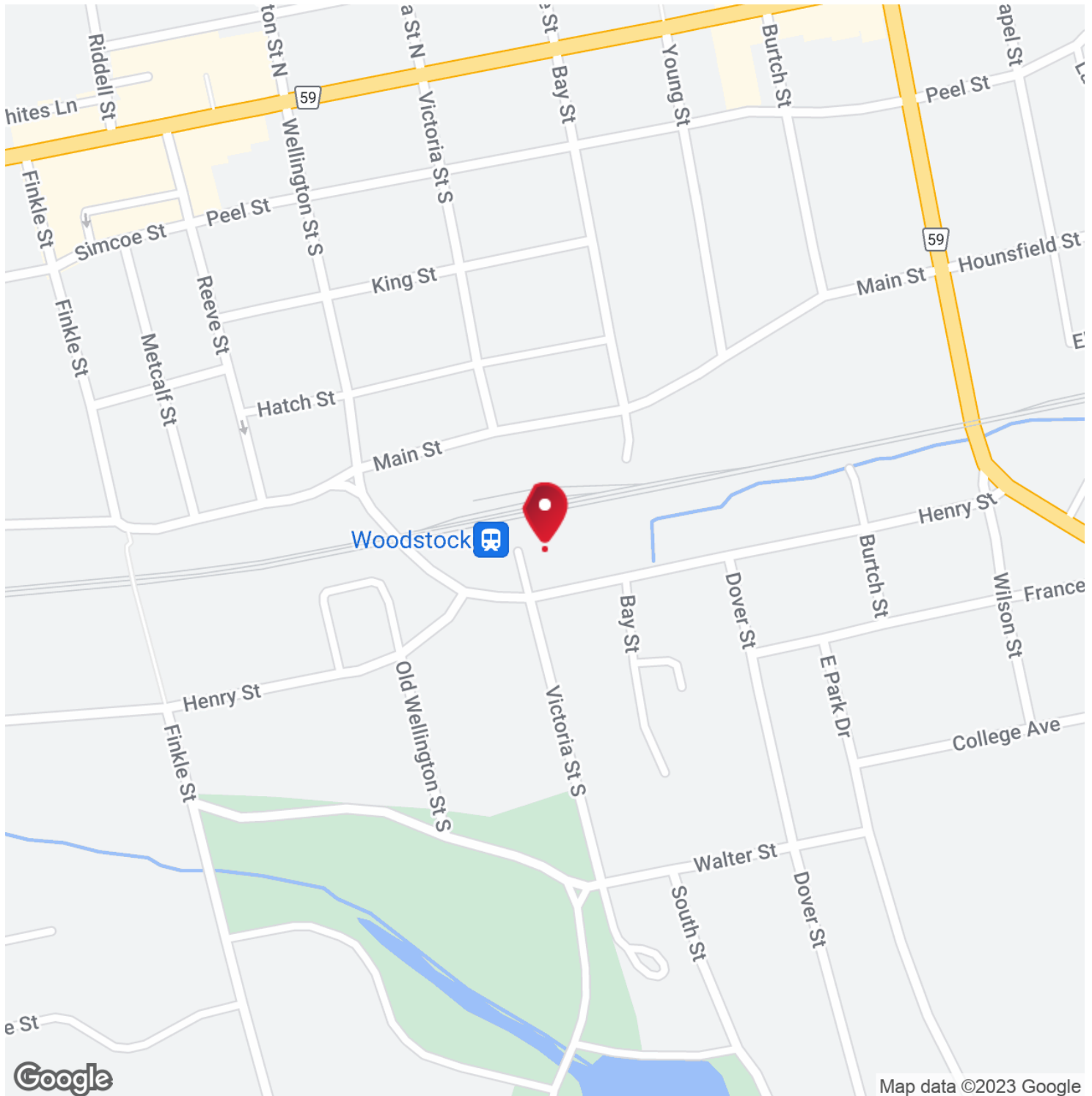
FOR SALE

MULTI FAMILY- MIXED USE

LOCATION MAP

95 VICTORIA ST

95 VICTORIA ST S, WOODSTOCK, ON N4S 3K2



HALLMARK REALTY LTD
Each office independently owned and operated

MARIYA LILLY
Broker
416.494.7653
mariya.lilly@remax.net

STEPHEN LILLY
Broker
416.494.7653
info@TorontoCommercialProperties.ca
ON - Ontario #4745527
685 Sheppard Ave E Ste 401,
Toronto, ON M2K 1B6

95 VICTORIA ST

95 VICTORIA ST S, WOODSTOCK, ON N4S 3K2



STEPHEN LILLY

Broker

Direct: 416.494.7653 **Cell:** 416.802.4228
info@TorontoCommercialProperties.ca

RE/MAX HALLMARK REALTY LTD
685 Sheppard Ave E Ste 401, , Toronto, ON M2K 1B6
416.494.7653



MARIYA LILLY

Broker

Direct: 416.494.7653 **Cell:** 416.824.5078
mariya.lilly@remax.net

RE/MAX HALLMARK REALTY LTD
685 Sheppard Ave E Ste 401, , Toronto, ON M2K 1B6
416.494.7653



HALLMARK REALTY LTD
Each office independently owned and operated

MARIYA LILLY
Broker
416.494.7653
mariya.lilly@remax.net

STEPHEN LILLY
Broker
416.494.7653
info@TorontoCommercialProperties.ca
ON - Ontario #4745527
685 Sheppard Ave E Ste 401,
Toronto, ON M2K 1B6